

Name: _____ Grade: _____

Mission Planning Quiz (06)

1: Refer to Chart 1: Determine the approximate latitude and longitude of Currituck County Airport.

- A) 36°24'N - 76°01'W
- B) 76°01'W - 36°24'N
- C) 37°36'N - 75°59'W

2: Using the same chart, what is the ceiling of the Class C airspace over Elizabeth City airport?

- A. 2,500 feet
- B. 226 feet
- C. 242 feet

3: Refer to Chart 2: At Coeur D'Alene, which frequency should be used as a Common Traffic Advisory Frequency (CTAF) to monitor airport traffic? _____

- A: 108.8 MHz
- B: 122.8 MHz
- C: 122.05 MHz

4: Refer to Chart 4: The top of the lighted stack approximately 12 nautical miles from the Savannah VORTAC on the 350° radial is _____

- A. 454 feet MSL
- B. 404 feet AGL
- C. 418 feet MSL

5: Refer to Chart 5: What minimum altitude is a plane required to fly over the Cedar Hill TV towers in the congested area south of NAS Dallas?

- A) 3,349 feet MSL
- B) 2,449 feet MSL
- C) 3,349 feet AGL

6: What is one of the neglected items when a pilot relies on short and long-term memory for repetitive tasks?

- A) Checklists
- B) Flying outside the envelope
- C) Situation awareness.

7: A _____ allows UAS flights anywhere in the country except restricted airspace and other areas, such as major cities, where the FAA prohibits UAS operations.

- A) General COA
- B) Limited COA
- C) Blanket COA or Waiver

8: Accident reports need to be filed with:

- A) FAA
- B) ATC
- C) NTSB

9: If you are interrupted while running your checklist you should:

- A: Continue where you left off
- B: Go back one step and resume from there
- C: Restart the checklist again from the beginning

10: Media Coverage Providing Crucial Information to the Public is an example of a situation that might require:

- A. A General COA
- B. A Limited COA
- C. An SGI



Chart 1:



Chart 2



Chart 3



Chart 4

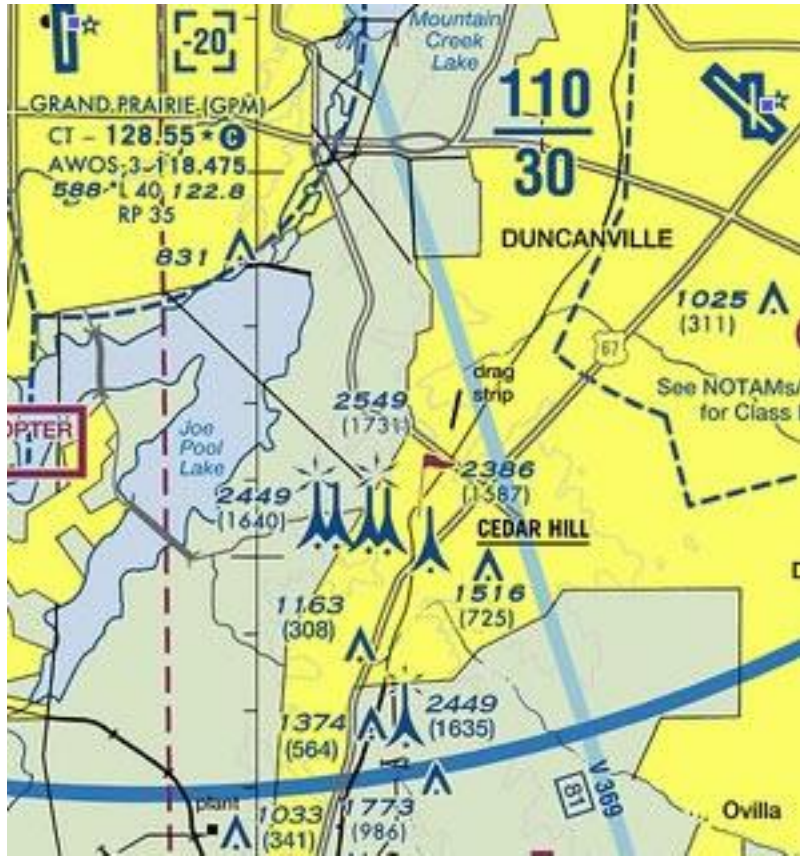


Chart 5